



Katastrofetriage – hva gjør Sverige?

Per Örtenwall, MD, PhD

PKMC/FömedC

Göteborg



Som man gör i Norge
– diskuterar saken!

Tack för ordet!

Purpose of triage

- Select the right patient
- Correct medical facility
- In correct time



"Have you been waiting long to see the doctor?"



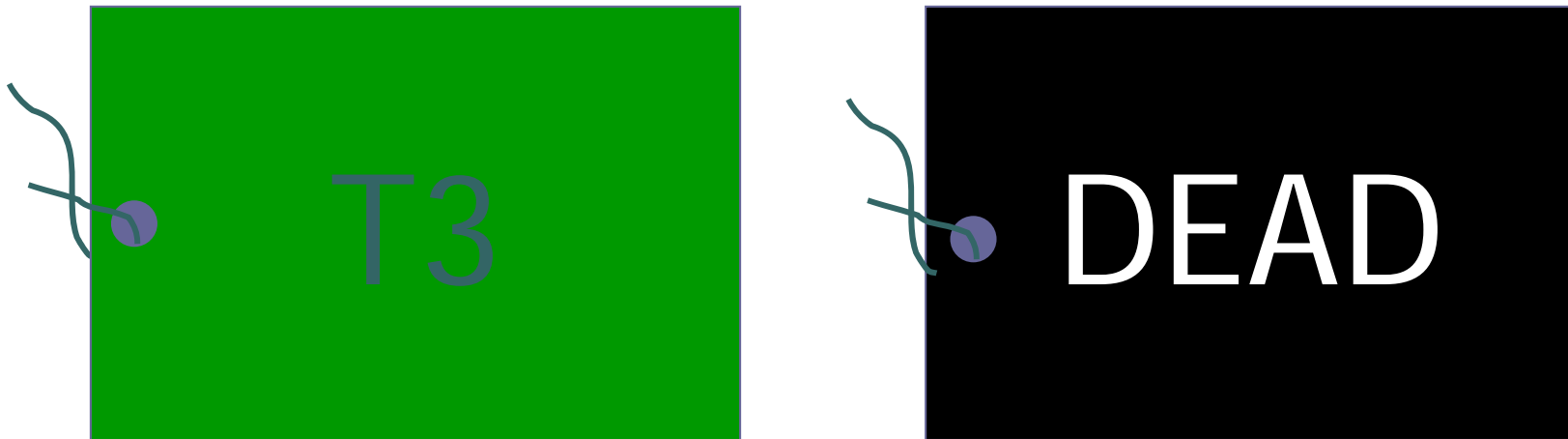
Det finns inget
nationellt triage-
system i Sverige!

Det gäller både algoritm och
utmärkning...

HISTORISKT



ANATOMISK TRIAGE



UTVECKLING



FYSIOLOGISK TRIAGE (MIMMS)



Reminder:

- Everyone talks about triage as a cornerstone in MCI management...
- It is just a small part of the medical response!
- (very) few medical providers in Sweden have ever practised triage according to a formalised system
- Even fewer have ever used triage tags...



Det ideala systemet;

- Enkelt
- Snabbt
- Reproducerbart
- täcker alla typer av händelser
- hög precision



Um novo vídeo todo dia!



<http://www.bacatinha.com.br>



Exempel

FYSIOLOGI

- CRAMS (1982)
- PHI (1986)
- TS
- RTS (1989)
- PSS (2003)
- Etc...

ANATOMI

- ICD
- AIS
- ISS/NISS
- etc

KOMBINERADE

TRISS

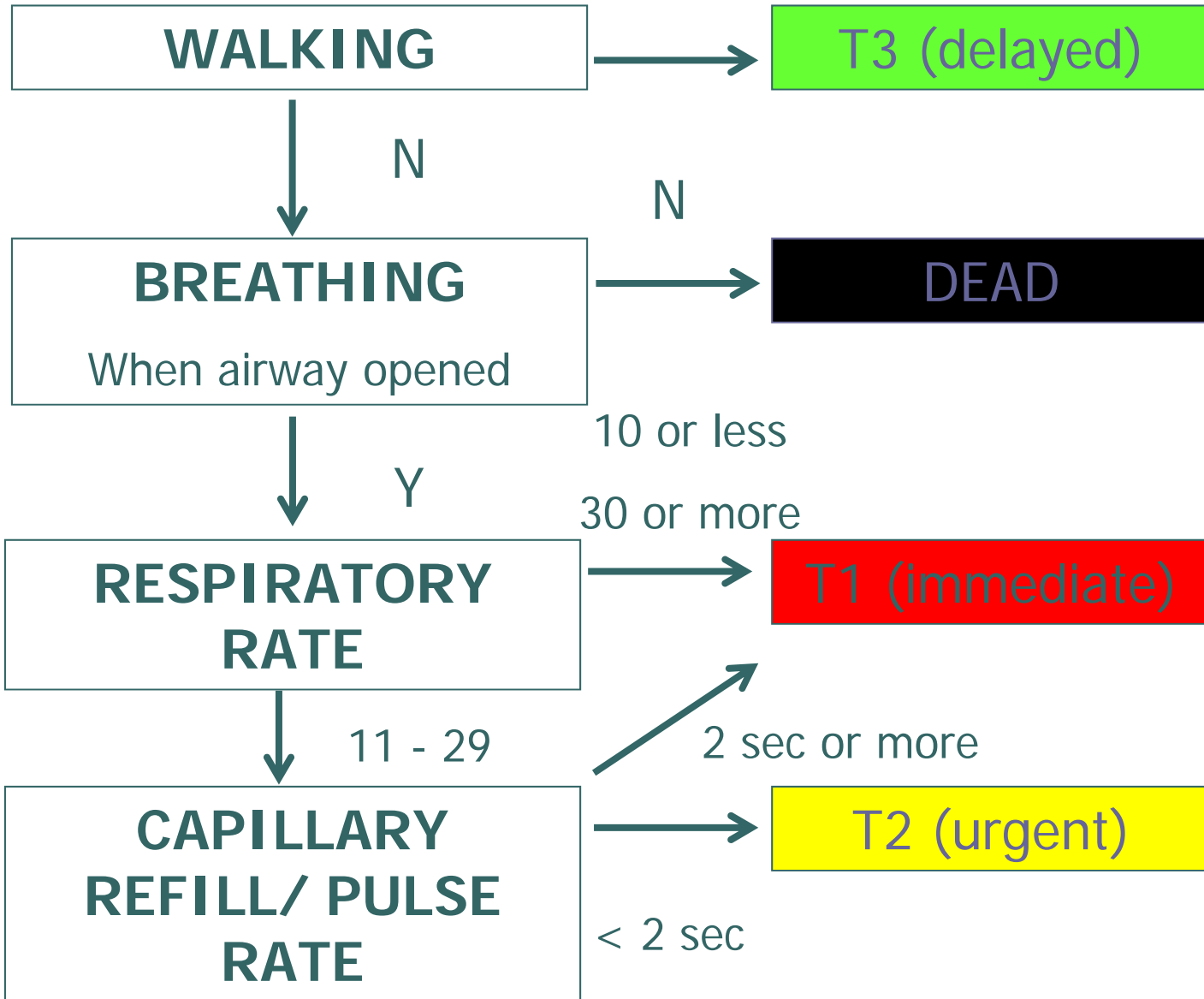
etc

**Antalet ett tecken på att det ideala systemet
ännu inte finns!**

SIEVE



FIRST RESPONDER



SORT



HEALTH CARE PERSONNEL (When time permits...)

STEP 1: calculate the GLASGOW COMA SCORE (GCS)

A Eye opening:		B Verbal response:		C Motor response:	
spontaneous	4	orientated	5	obeys commands	6
to voice	3	confused	4	localises	5
to pain	2	inappropriate	3	pain withdraws	4
none	1	incomprehensible	2	pain flexes	3
		no response	1	pain extends	2
				no response	1

$$\text{GCS} = \text{A} + \text{B} + \text{C}$$

STEP 2: calculate the TRIAGE SORT SCORE

X GCS		Y Respiratory rate		Z Systolic BP	
13 - 15	4	10 - 29	4	90 or more	4
9 - 12	3	30 or more	3	76 - 89	3
6 - 8	2	6 - 9	2	50 - 75	2
4 - 5	1	1 - 5	1	1 - 49	1
3	0	0	0	0	0

$$\text{TRIAGE SORT SCORE} = \text{X} + \text{Y} + \text{Z}$$

STEP 3: assign a triage PRIORITY

12	=	PRIORITY 3
11	=	PRIORITY 2
10 or less	=	PRIORITY 1

STEP 4: upgrade PRIORITY at discretion of senior clinician, dependent on the anatomical injury/working diagnosis

Keep a record of the NUMBER and PRIORITY of casualties you triage
Pass this to the AMBULANCE COMMANDER on completion



Other triage systems

- START (jumpstart) and SAVE
- Careflight
- Sacco Triage
- SALT



Interesting fact:

- U.S. CDC consensus group to decide which model to use
- Complete disagreement
- New model: SALT as a proposed National guideline



Några problem;

- Begreppet "Expectant" som triagekategori: När och hur?
- Ersätta termen "Död" med ordet "Livlös" på triagekortet



Viktigaste erfarenheter 22. 7

- Följde "vanliga rutiner" om vilka patienter som skall gå till Traumesenter (=Likhetsprincipen)
- Förutsatte tillgång till kvalificerad prehospital personal + transportresurser
- (men behov finns för triagesystem när gränserna överskrids)
- Ingen (övertygande) evidens för vilket system som är bäst
- *"Anxiety provokes memory loss, so learn one system and stick to it"*



Trusler (hot)?

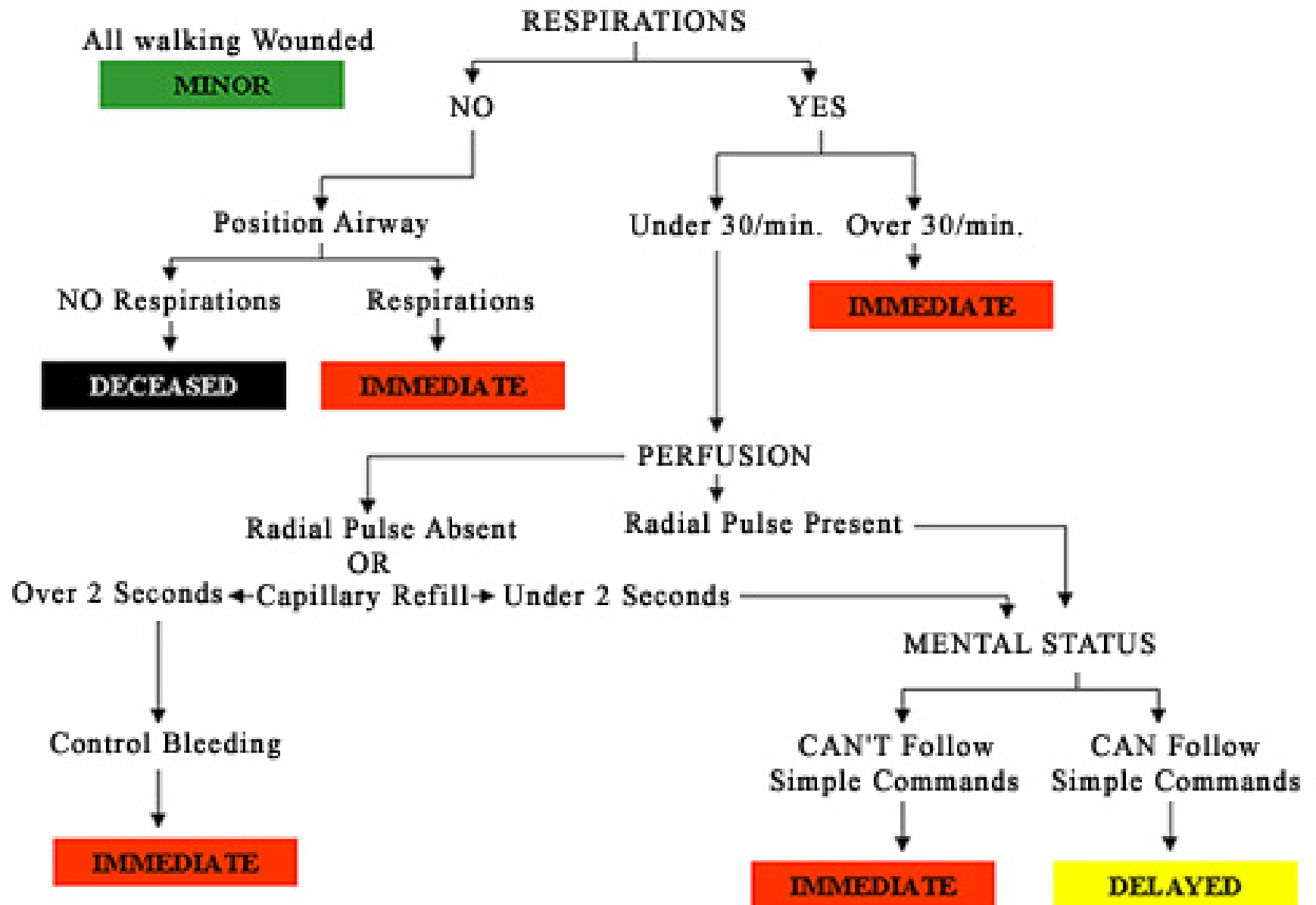
- Terror (mot sjukvården)?
- Klimatförändringar?
- Pandemi?

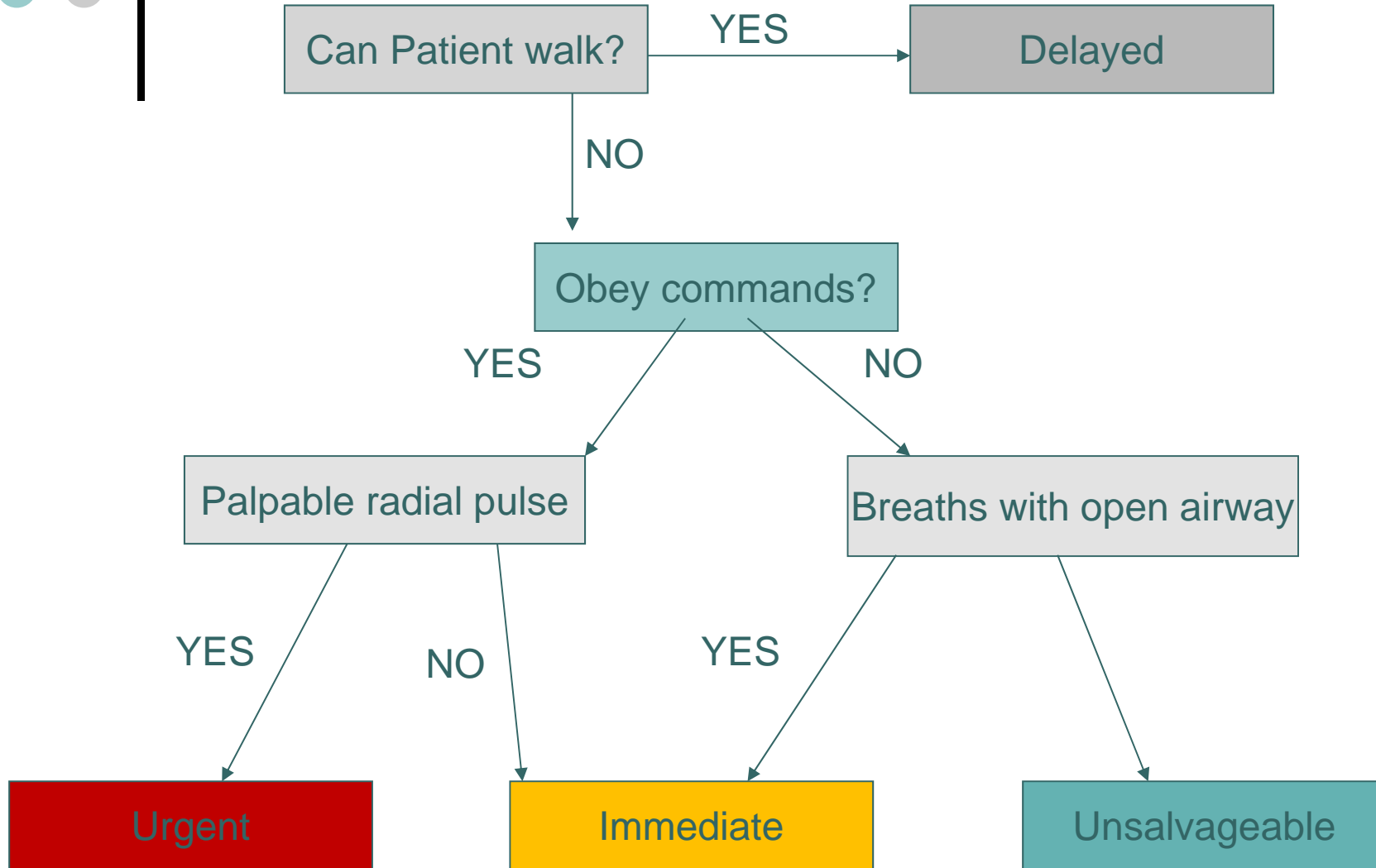


Åtgärder




- Kopiera inte "lean production" på health care utan att reflektera över effekterna på beredskapen!
- Omvärldsbevakning







~~Think Sharp~~ **Sacco Score** **R + P + M +/- A**

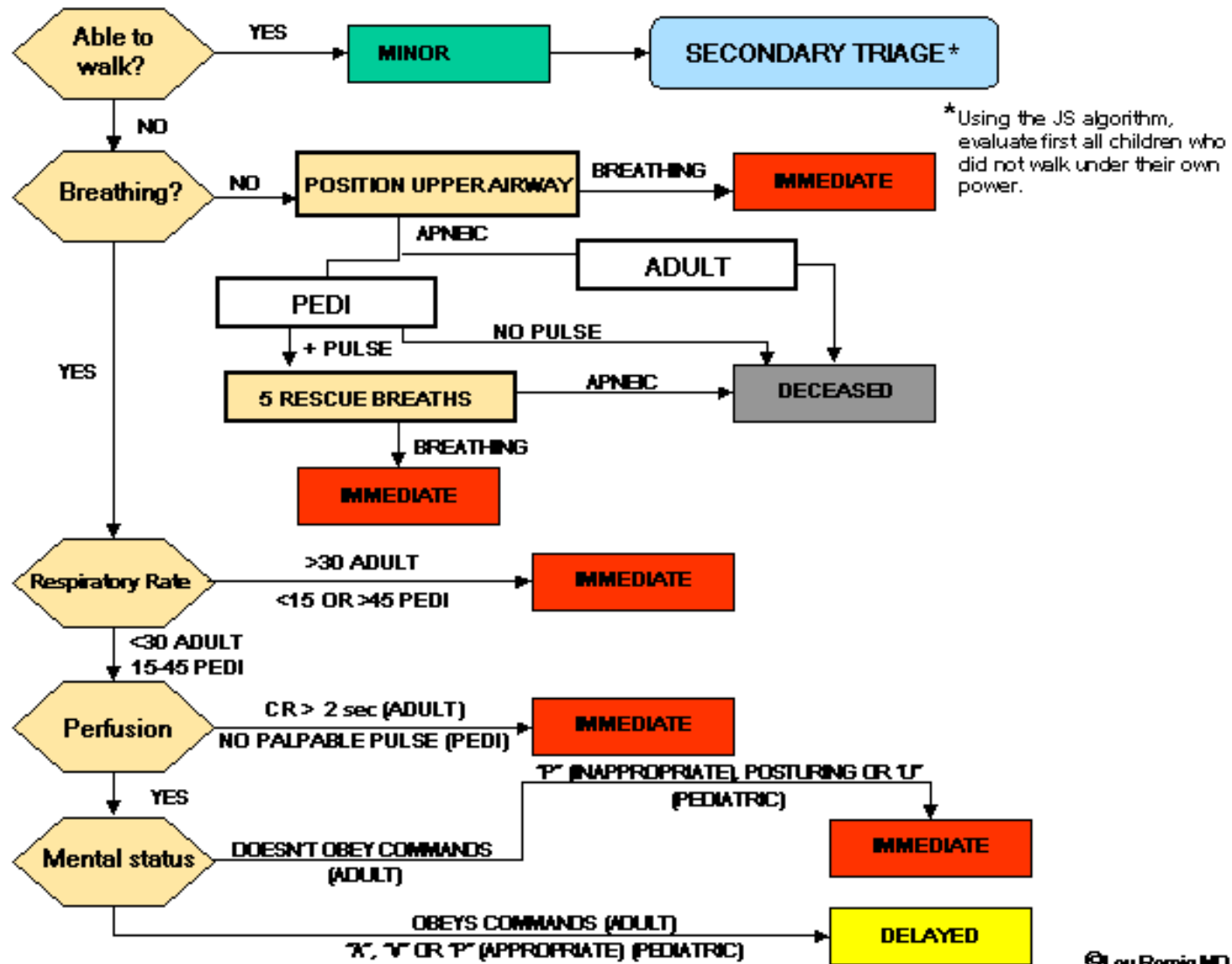
1 min [60 seconds]	0	1	2	3	4
R 	0	1-9*	36+	25-35	10* -24
P 	0	1-40	41-60*	121+	61* -120
M 	No Response	Extension/ Flexion	Withdraws	Localizes	Obeys Commands

A Adjustment: Age: 0-7 8-14 15-54 55-74 75+

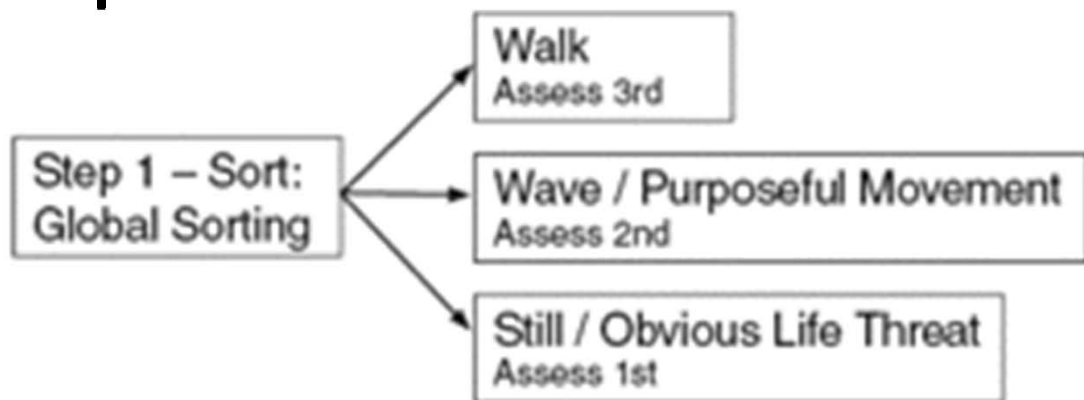
 +2 +1 0 -2 -3

* - measure must be verified

Combined START/JumpSTART Triage Algorithm



©Lou Romig MD, 2002



Step 2 – Assess: Individual Assessment

